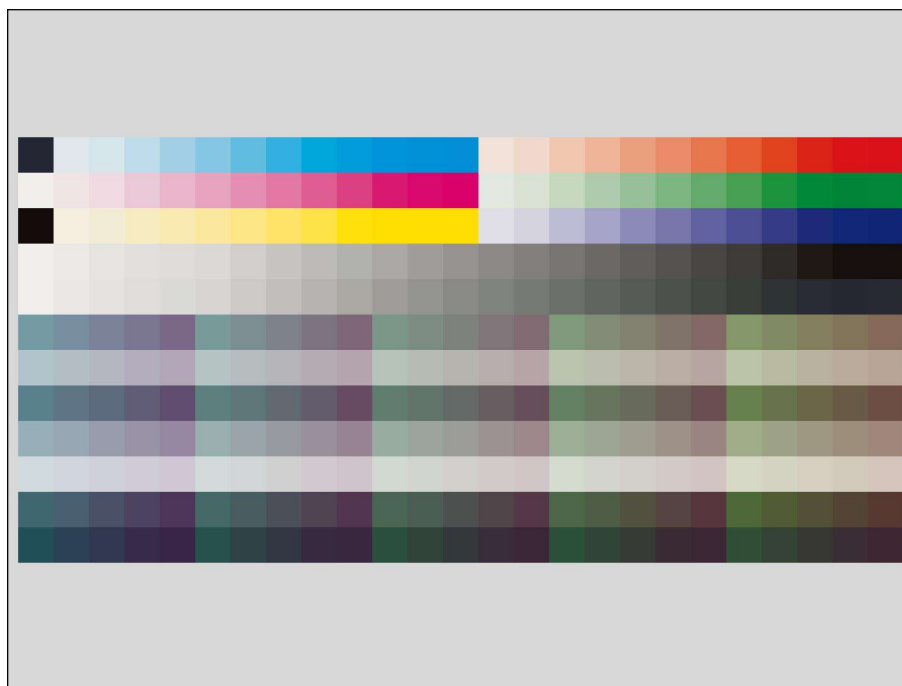


Color quality certificate



Measurement **P2P51-M1-2024_05_29T17_36_17.txt**
Filter D50 (M1:ISO-13655)
Standard: AtlanticPkg-CGATS.21-2_SBS
Paper: Glossy coated

Measuring method

 Illuminant: D50M1
 Observer: 2°/2°
 Density: ISO Status T
 Polarization: none
 Measuring device: X-Rite i1Pro3(SA)

Job number: Atlantic Caribbean Packaging
Job Name: G7 Target Calibration
Sheet number: SBS coated CX102
Comment: SCCA G7 Target Pass 5-29-24

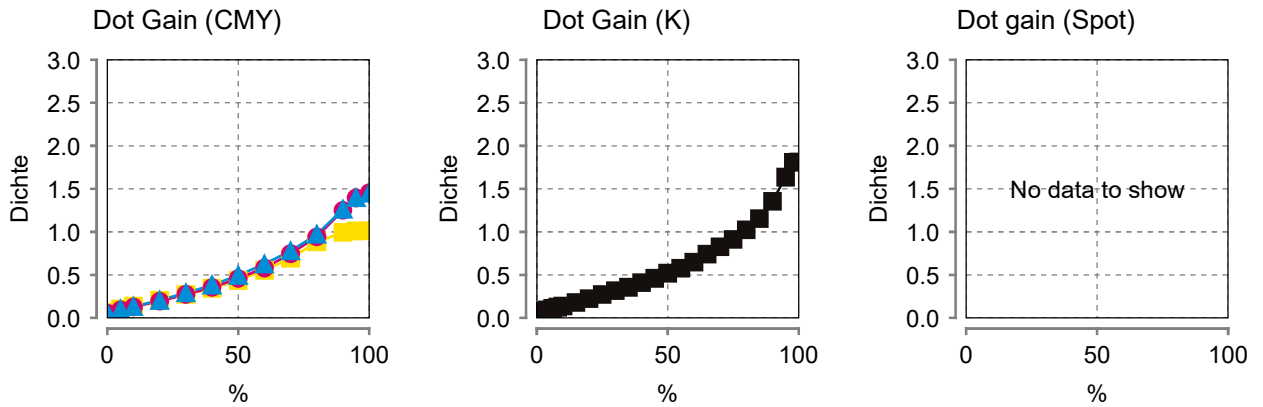
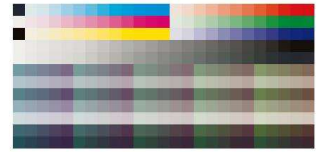
Job number: Atlantic Caribbean Packaging
 Job Name: G7 Target Calibration
 Sheet number: SBS coated CX102
 Comment: SCCA G7 Target Pass 5-29-24



Measurement: P2P51-M1-2024_05_29T17_36_17.txt

Standard: AtlanticPkg-CGATS.21-2_SBS

Paper: Glossy coated



	Paper	d
L*	95.1	0.0
a*	0.1	-0.0
b*	1.5	0.1



	L*	a*	b*	dE00
CYAN	55.4	-37.1	-50.1	2.3
MAGENTA	48.8	77.1	0.2	0.8
YELLOW	90.0	-5.5	94.5	1.1
BLACK	12.6	2.0	3.6	4.2
Red	48.7	70.1	47.2	2.3
Green	50.6	-67.7	25.7	1.3
Blue	25.2	19.2	-45.1	0.8



CMY patches dL*	dL*	Max	K patches dL*	dL*	Max	CMY patches dCh*	dCh*	Max
Weighted peak	1.3	3.0	Weighted peak	1.8	3.0	Weighted peak	2.2	3.0
Weighted average	0.5	1.5	Weighted average	0.9	1.5	Weighted average	1.1	1.5
HC (25/19/19)	0.4	3.0	HC (25)	0.4	3.0	HC (25/19/19)	0.6	3.0
HR (50/40/40)	1.0	3.0	HR (50)	1.7	3.0	HR (50/40/40)	1.5	3.0
SC (75/66/66)	0.2	3.0	SC (75)	0.7	3.0	SC (75/66/66)	1.7	3.0